

PART OF SECTION 29, T.6N., R.1W., S.L.B. & M.  
**PHEASANT LANDING 2ND AMENDMENT**

IN NORTH OGDEN CITY  
SCALE 1" = 30'

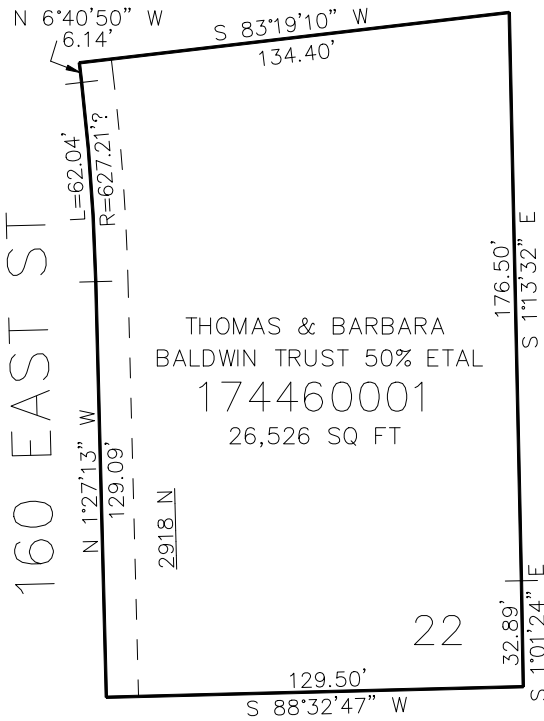
TAXING UNIT: 10

SEE PAGE 424

SEE PAGE 424

SEE PAGE 424

SEE PAGE 424



10' UTILITY & DRAINAGE EASEMENTS EACH  
SIDE OF PROPERTY LINES AS INDICATED  
BY DASHED LINES EXCEPT AS OTHERWISE  
SHOWN.

FOR COMPLETE SURVEY DATA SEE  
ORIGINAL DEDICATION PLAT IN  
BOOK 92, PAGE 83 OF RECORDS.